





CRAFTED FOR
UNPARALLELED
GROWTH





FORTUNE PLAZA



2 BHK APARTMENTS | SHOPS | OFFICES

A brand-new commercial and residential project in Satara, Fortune Plaza is a one-of-a-kind project that caters to business owners and home-seekers.

Situated right alongside a major road, Fortune Plaza assures easy connectivity and convenience. With ample space for shops and offices, accompanied with luxurious 2BHK apartments, Fortune Plaza promises both an excellent business experience and a comfortable lifestyle.





reliable
INFRA

VISAWA GROUP

Working in the field of real estate for many years, Visawa Group has found great progress and respectability within Satara and nearby cities. Besides being renowned for their unique and innovative projects, Visawa Group has also earned a reputation for ensuring that the needs for their customers are always met.

Visawa Group and its partner firm Reliable Infra have constructed more than 800 flats till date. Together, they plan to continue fulfilling the dreams of their customers and providing them with their ideal homes.





PROJECT FEATURES



10 luxurious 2BHK flats

Featuring four floors of comfortable and stylish flats.



14 spacious shops

Featuring two floors of spacious and accessible shops.



2 executive office spaces

Featuring two office spaces for professional needs.



Convenient Location

Situated only minutes away from Y.C. College, along a major road.



PROJECT SPECIFICATIONS

Electrical

- Concealed electrification with modular switches
- Ceiling fan point in every room
- T.V. cable point in living room

Paint

- Apex paint for outside walls
- Emulsion paint for inside walls

Doors

- Decorative main entrance door
- Galvanized frame with flush door for all doors
- Marble frame with P.V.P. door for all toilets

Flooring and tiles

- Vitrified 2 X 4 tile flooring with skirting for all rooms
- Antiskid Ceramic flooring in bathroom and balcony
- Designer color glazed tiles in bathroom
- 3' glazed white tiles in W.C.

Sanitary wear and fittings

- Concealed Plumbing
- Mixer Unit
- European pan and wash basin attached toilet
- Indian pan for common toilet

Window

- 3 track aluminium sliding window
- Louvered windows for toilet
- Safety grill for all windows

Kitchen

- Granite platform with S.S. sink for kitchen
- Glazed dado tiles till ceiling level

Lift

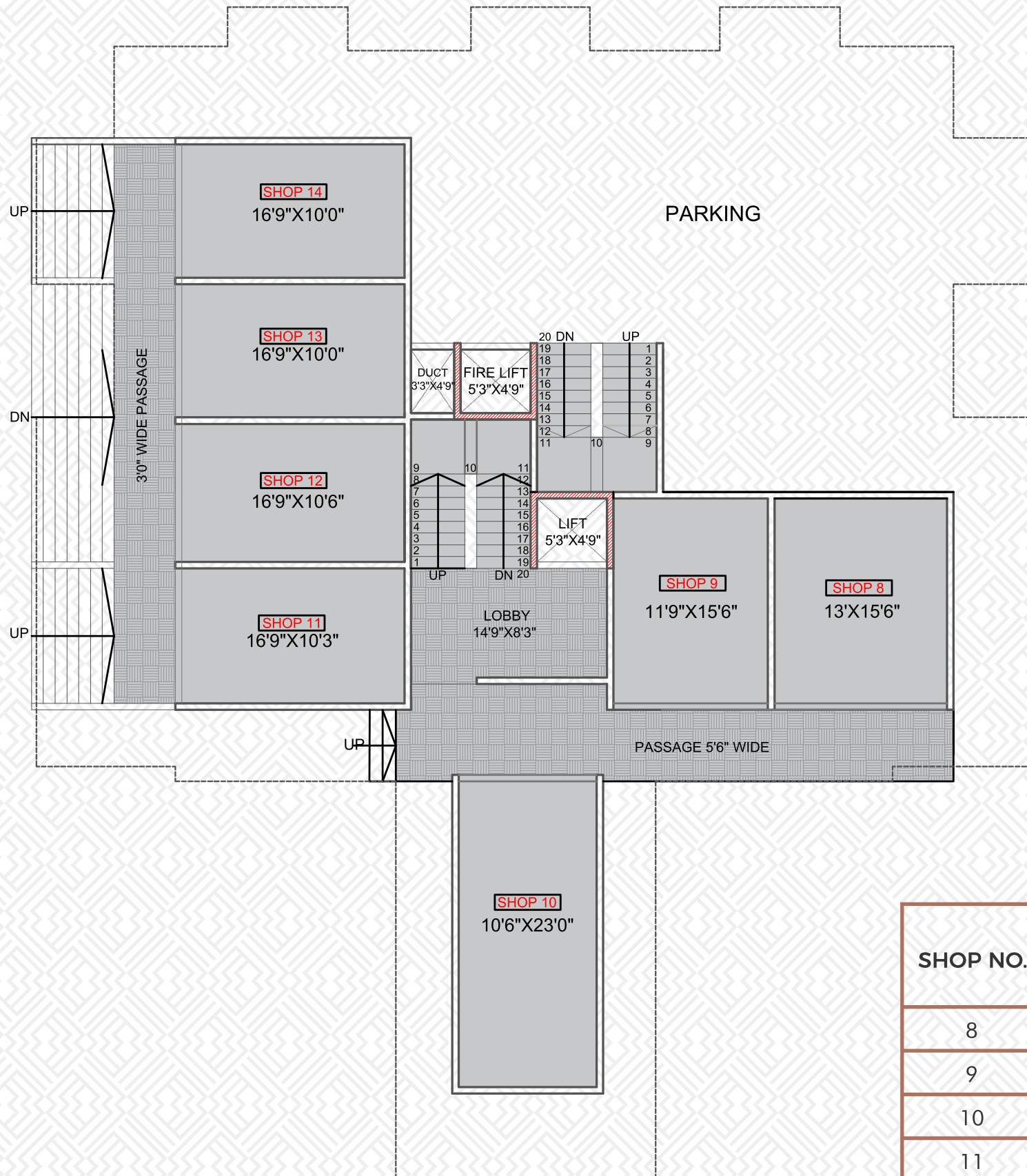
- I.S.I. mark lift system

Structure

- Earthquake resistance structure
- Neeru finish plaster for inside walls
- Sand finish plaster for outside walls

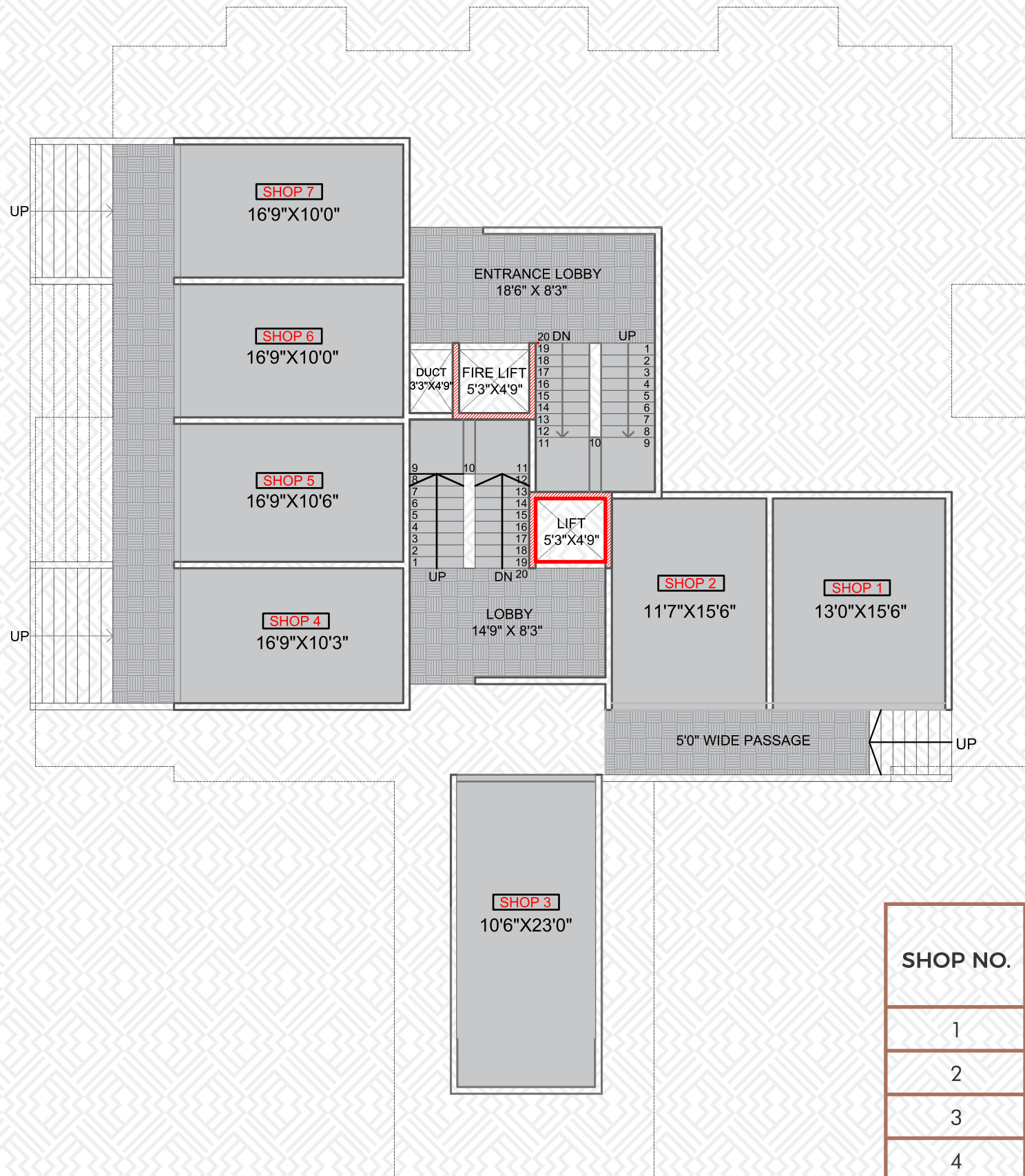


CRAFTED FOR
SPLENDROUS
LIVING



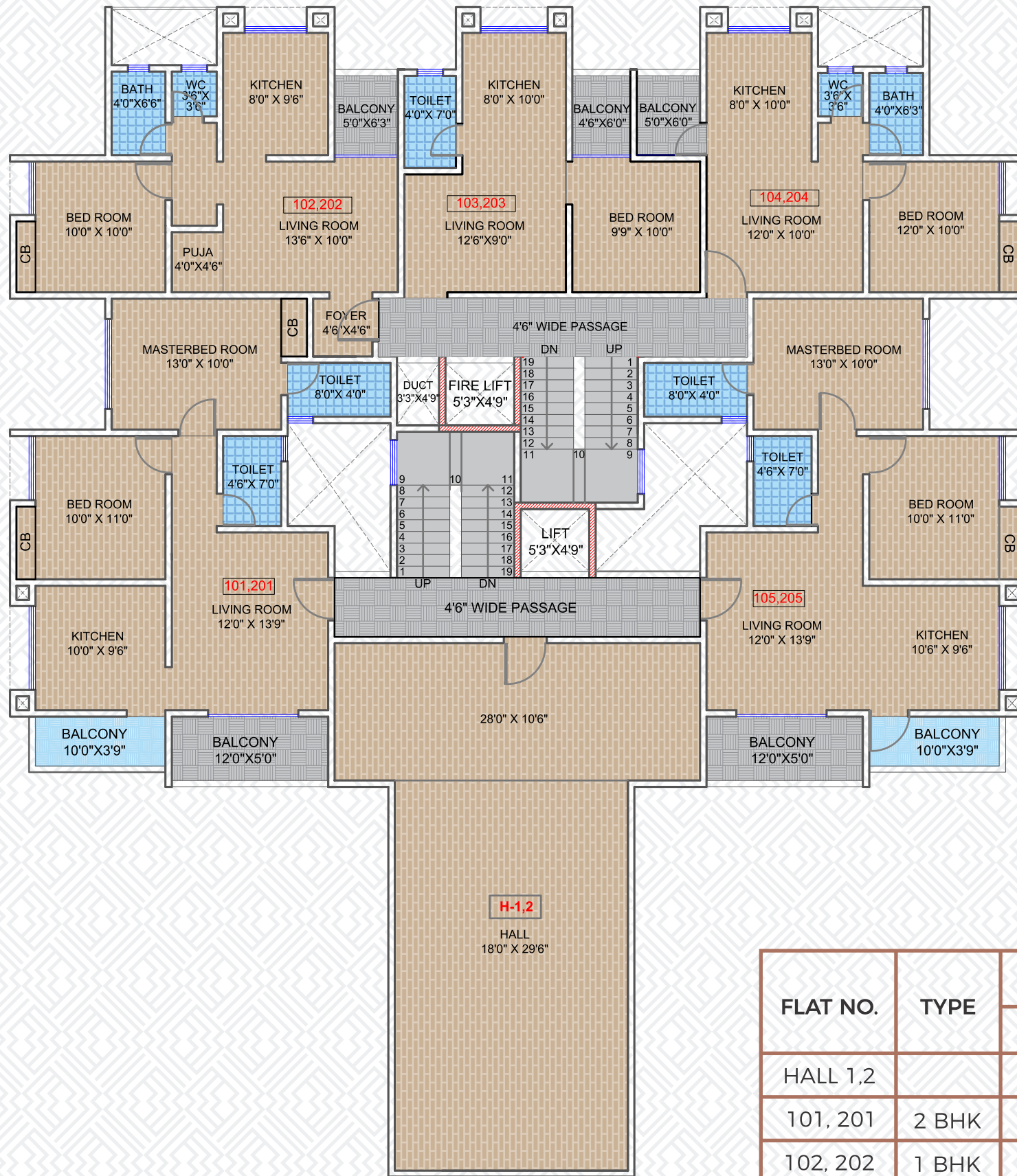
**LOWER
GROUND**

SHOP NO.	SALEABLE AREA	
	SQ. M.	SQ. FT.
8	28.67	309
9	25.65	276
10	33.84	364
11	24.33	262
12	24.89	268
13	24.02	258
14	24.02	258



UPPER
GROUND

SHOP NO.	SALEABLE AREA	
	SQ. M.	SQ. FT.
1	28.67	309
2	25.65	276
3	33.84	364
4	24.33	262
5	24.89	268
6	24.02	258
7	24.02	258



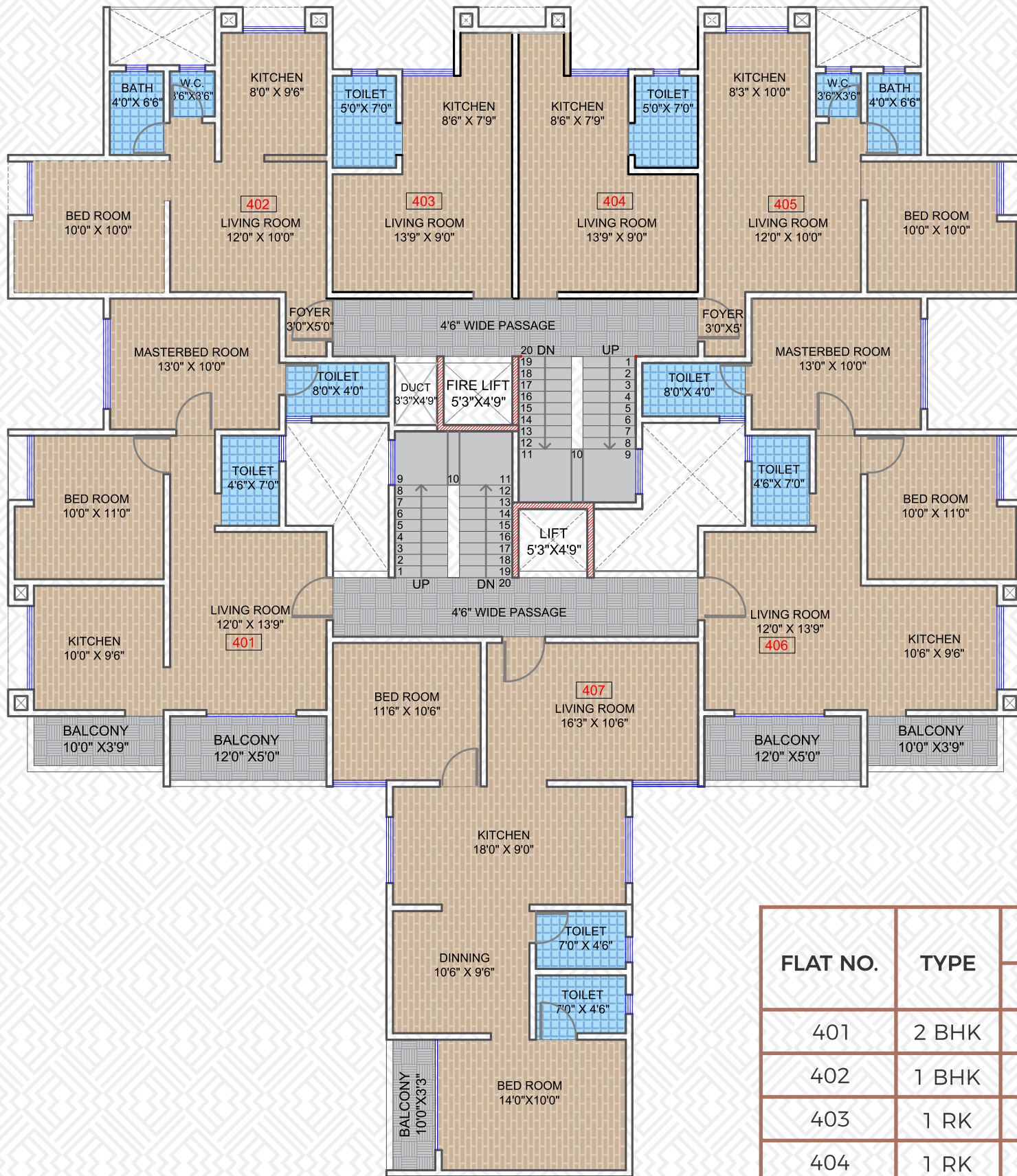
TYPICAL FLOOR PLAN
FIRST & SECOND FLOOR

FLAT NO.	TYPE	SALEABLE AREA	
		SQ. M.	SQ. FT.
HALL 1,2		109.24	1176
101, 201	2 BHK	92.80	999
102, 202	1 BHK	60.64	653
103, 203	1 BHK	47.28	509
104, 204	1 BHK	50.49	543
105, 205	2 BHK	91.69	987



TYPICAL FLOOR PLAN THIRD FLOOR

FLAT NO.	TYPE	SALEABLE AREA	
		SQ. M.	SQ. FT.
301	2 BHK	92.80	999
302	1 BHK	60.64	653
303	1 BHK	47.28	509
304	1 BHK	50.49	543
305	2 BHK	91.69	987
306	2 BHK	105.31	1134



TYPICAL FLOOR PLAN FOURTH FLOOR

FLAT NO.	TYPE	SALEABLE AREA	
		SQ. M.	SQ. FT.
401	2 BHK	91.69	987
402	1 BHK	48.59	523
403	1 RK	31.01	334
404	1 RK	31.01	334
405	1 BHK	48.59	523
406	2 BHK	91.69	987
407	2 BHK	105.31	1134



LOCATION MAP



CRAFTED FOR
PROSPEROUS
ENTERPRISES



CRAFTED FOR
SERENE LIFESTYLE



Site - 262/2/2/2, Opp. Y. C. college, Godoli, Satara

Office - Office No. 1 to 7, 1st Floor, Gajanan Plaza, Visawa Park, Satara - 415001

Contact - Hemant Kadam - 9992929662 | Ramesh Mane - 8888855870 | Ghansham Matkar - 9922815252



RERA Registered Project

Disclaimer -

This brochure is meant only for promotional purpose and has no legal value. The plans, specifications, images and other details herein are only indicative and subject to the approval of the concerned authorities. The Developer/Owner reserves the right to change any or all of these or extend the number of floors in the interest of the development, without prior notice or obligation. Artists' impressions are used to illustrate the amenities, specification, image and other details and these may be applicable to select apartments only. Tolerance of +/- 2% is possible in the unit areas on account of design and construction variance. All brands stated are subject to final decision of the project architect. This printed material does not constitute an offer and/or contract of any type between the developer/ owner and the recipient. Any purchase/leasee of this development shall be governed by the terms and conditions of the Agreement for Sale/Lessee entered into between the parties, and no detail mentioned in this printed material shall in any way govern such transaction.